

# INFLITE GROUP



 INFLITE

## WHOLESALE TRADE

Extraordinary Experiences Every Day

INFLITE Vision - our vision is to build a network of unique experiences that amaze our guests and enable them to see New Zealand their way.

INFLITE Mission - our mission is to build safe, world-class, sustainable experiences delivered through a seamless personalised experience.

This hunger for excellence is reflected in our Qualmark Gold certification.

“As an operator, we’re concerned about climate change so chose to commit to going CarboNZero. It’s our responsibility to minimise our impact as much as possible to ensure that our sensitive environments are protected for future generations to come.

INFLITE Group is committed to reducing our impact on the environment and making our business and those we partner with, more sustainable. As we grow and develop, we’re committed to making a difference to our business, and to the communities within which we operate.





INFLITE Charters set an exemplary standard for private and corporate charter flight solutions. At INFLITE we are all about the detail. Every aspect is meticulously tailored to meet the customer's requirements. This personalised service sets us apart.



Established 30 years ago, Heletranz is Auckland's most experienced and trusted helicopter company operating a fleet of single and twin-engine helicopters with leather seats, bose headsets and great sightseeing windows with unobstructed, panoramic views. Your comfort and safety is paramount to us.



Nelson Tasman Air offers exceptional scenic tours and adventures in the stunning Abel Tasman National Park, Golden Bay, Kaikoura, Marlborough and the West Coast. From scenic flights to heli mountain biking, Nelson Tasman Air has something for everyone



Mount Cook Skiplanes and Helicopters by INFLITE offer a range of incredible flights in the Aoraki/Mt Cook region. One of two places in the world to offer skiplane adventures. Our world exclusive Ultimate Alpine Tour combines the best of both worlds with flights in both a skiplane and helicopter.



Skydive Abel Tasman with unique views of both North and South Islands, golden sands of the Abel Tasman and the beautiful blue ocean has been creating lifelong memories for people from all walks of life for 30 years.



Skydive Franz Josef & Fox Glacier boasts the epic 20,000ft skydive. The first company in the country to offer skydives from these high altitudes. It's on Redbull's list of top 9 places to skydive for a reason. Customers dive over the amazing Southern Alps of New Zealand, catching a glimpse of Aoraki/Mt Cook, the Franz Josef Glacier and the Fox Glacier on their way down.



There's no better way to experience Aoraki/Mt Cook National Park than free-falling over it! 60 seconds of freefall allows for plentiful time to take in the stunning back drop filled with snow-capped mountains, braided river beds and the mighty Aoraki/ Mt Cook.



Sky Suites offer the amazing, unique experience of staying in a suite of five above the hangar of New Zealand's most spectacular skydiving experience, Skydive Mt Cook, at Pukaki Airport, Twizel.





# OUR LOCATIONS

## INFLITE Charters

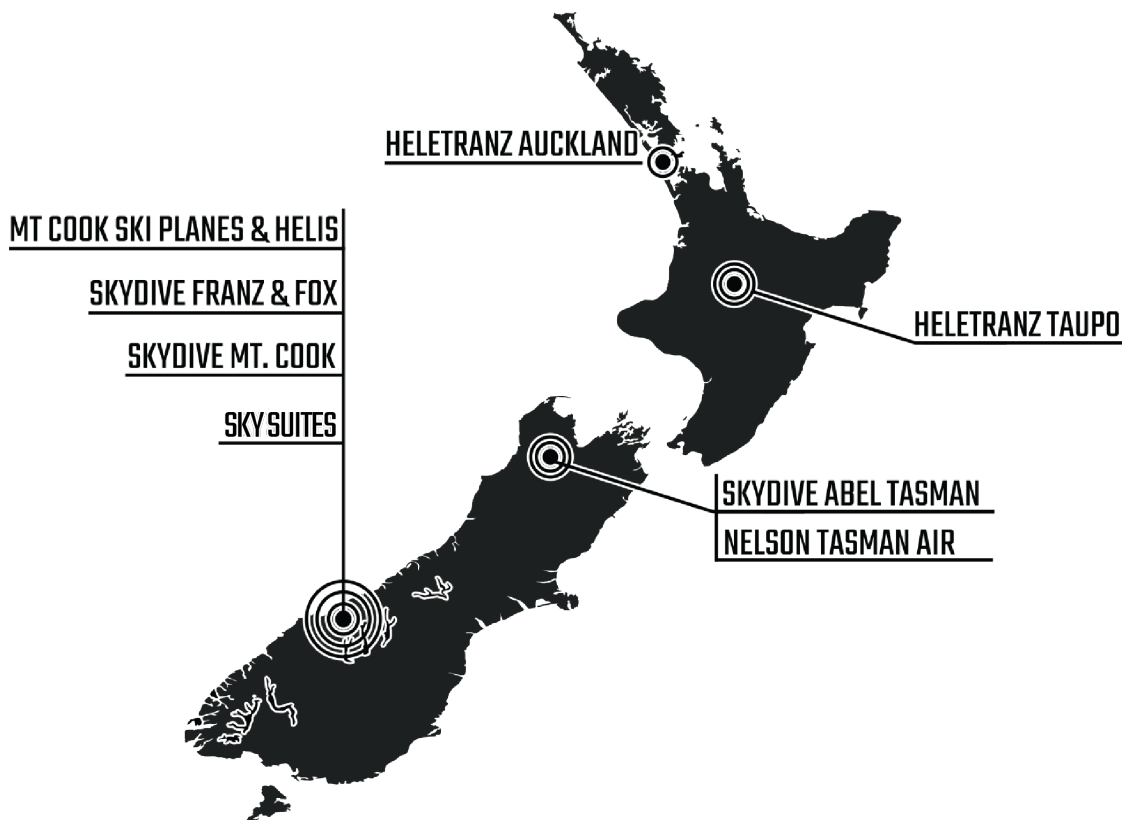
234 Rosedale Road, Albany  
Auckland 0622, New Zealand  
Phone: +64 9 281 5635  
Email: [charters@inflite.nz](mailto:charters@inflite.nz)  
Web: [www.inflitecharters.com](http://www.inflitecharters.com)

## Heletranz Helicopters Auckland

234 Rosedale Road, Albany Auckland  
0622, New Zealand  
Phone: +64 9 415 3550  
Email: [info@heletranz.co.nz](mailto:info@heletranz.co.nz)  
Web: [www.heletranz.co.nz](http://www.heletranz.co.nz)

## Heletranz Helicopters Taupo

33 Anzac Memorial Drive  
Taupo Airport, New Zealand  
Phone: +64 7 377 8805  
Email: [taupo@inflite.nz](mailto:taupo@inflite.nz)  
Web: [www.inflite.nz](http://www.inflite.nz)



## Skydive Abel Tasman

16 College Street, Motueka, 7120  
Phone: +64 210 282 8737  
Email: [jump@skydive.co.nz](mailto:jump@skydive.co.nz)  
Web: [www.skydive.co.nz](http://www.skydive.co.nz)

## Mt. Cook Ski Planes & Helis

Aoraki Mount Cook Airport  
Mount Cook Road, Mount Cook, 7999  
Phone: +64 3 430 8026  
Email: [fly@mtcookskiplanes.com](mailto:fly@mtcookskiplanes.com)  
Web: [www.mtcookskiplanes.com](http://www.mtcookskiplanes.com)

## Skydive Franz Josef & Fox Glacier

69 Cron Street, Franz Josef / Waiau, 7886  
Phone: +64 3 752 0714  
Email: [jump@skydivefranz.co.nz](mailto:jump@skydivefranz.co.nz)  
Web: [www.skydivefranz.co.nz](http://www.skydivefranz.co.nz)

## Nelson Tasman Air

16 College Street, Motueka, 7120  
Phone: 0508 223 5247  
Email: [fly@nelsontasmanair.co.nz](mailto:fly@nelsontasmanair.co.nz)  
Web: [www.nelsontasmanair.co.nz](http://www.nelsontasmanair.co.nz)

## Skydive Mt. Cook

Pukaki Airport, State Highway 8 Pukaki,  
7999  
Phone: +64 3 976 0516  
Email: [jump@skydivemtcook.com](mailto:jump@skydivemtcook.com)  
Web: [www.skydivemtcook.com](http://www.skydivemtcook.com)

## Sky Suites

Pukaki Airport, State Highway 8 Pukaki,  
7999  
Phone: +64 3 976 0516  
Email: [Info@skysuites.co.nz](mailto:Info@skysuites.co.nz)  
Web: [www.skysuites.co.nz](http://www.skysuites.co.nz)

## **AGENT RESOURCES**

---

**INFLITE Trade Rates & Brand Library**

[inflite.nz/trade](https://inflite.nz/trade)

**INFLITE National Support Office & 24/7 INFLITE Reservations**

(+64)93774404 | 0800835083

**INFLITE Agent Registration**

[inflite.nz/agent-registration](https://inflite.nz/agent-registration)

---



# INFLITE CHARTERS







## **HUKA LODGE** **TAUPO**

The Lodge is nestled in 17 acres of parkland on the banks of the Waikato River, 300 metres upstream from the famous Huka Falls. This world-renowned Lodge is said to occupy the most beautiful position of any lodge in the world we are sure you'll agree. True retreats in every sense, the rooms are harmonious and deliberately simple in approach, designed to maximise the beauty of the landscape while providing soft light and layers of well appointed luxury. Cuisine continues to define the iconic nature of the hospitality experience at Huka Lodge. Over the years Huka Lodge has been fortunate to have many outstanding chefs, cooking superb food for its guests.





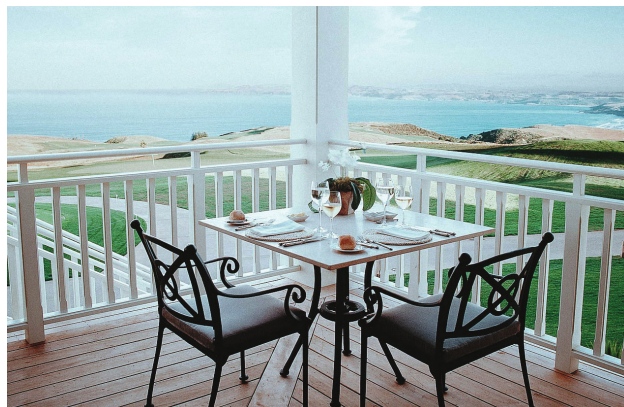
**KAURI CLIFFS**  
Northland



**EAGLES NEST**  
Russell



**WAIHEKE LODGES**  
Hauraki Gulf



**CAPE KIDNAPPERS**  
Hawke's Bay



**MATAKAURI LODGE**  
Queenstown



**BLANKET BAY**  
Queenstown





**FALCON 2000LX-**  
Seats up to 10



**NEXTANT 400XT**  
Seats up to 7



**CITATION MUSTANG**  
Seats up to 5



**CITATION SOVERIGN**  
Seats up to 9



**KING AIR BC200C**  
Seats up to 7



**SAAB 340 A**  
Seats up to 34





**A109**  
Seats up to 7



**BELL 427**  
Seats up to 7



**AS350 (SINGLE SQUIRREL)**  
Seats up to 6



**AS355 / 355 (TWIN SQUIRREL)**  
Seats up to 6



**EC120**  
Seats up to 4



**EC130**  
Seats up to 6



An aerial photograph of a city harbor at sunset. The sun is low on the horizon, casting a warm, golden glow over the scene. In the foreground, a helicopter is flying over the water, its rotors blurred. The middle ground shows a large harbor area with numerous shipping containers stacked in rows, several large cargo ships docked at piers, and a large ferry boat. In the background, a city skyline is visible, featuring a prominent tower with a spire. The sky is filled with soft, golden clouds.

# HELETRANZ HELICOPTERS





## **AUCKLAND CITY AND VOLCANOES SCENIC HELICOPTER FLIGHT**

Approx. 18 min

*These flights are non exclusive and may be shared with other passengers.*

Take off on Auckland's most popular scenic helicopter flight and see breathtaking views from the sky. Auckland was built on the isthmus between the Tasman Sea and the Hauraki Gulf and straddles a volcanic field of 55 volcanoes whose cones and lakes are best seen from the sky. Highlights include Eden Park Stadium, Viaduct Harbour, Sky Tower, Hauraki Gulf, Norths Shore beaches and Rangitoto Island crater.





## **COAST TO COAST SCENIC HELICOPTER FLIGHT**

Approx. 36 min

*These flights are non exclusive and may be shared with other passengers.*

When time is precious and there's so much to see, this flight is an absolute must! Experience the awe-inspiring beauty of lush, green vineyards, and Auckland's wild and rugged west coast with its black sand beaches and the Waitakere Ranges, followed by the contrasting panoramic views of the City. Including the Harbour Bridge, the bustling Viaduct, Sky Tower, Museum and Rangitoto Island crater.

---



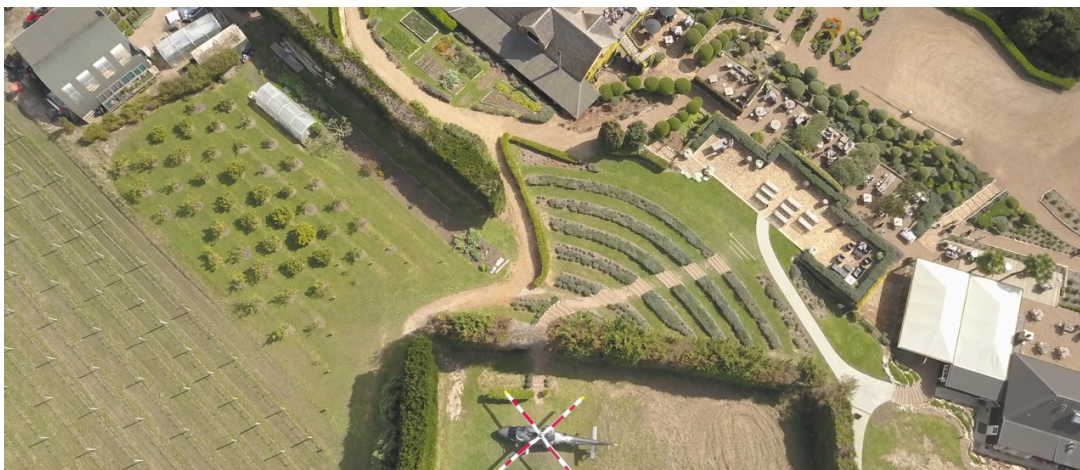
## **COROMANDEL AND HAURAKI SCENIC HELICOPTER FLIGHT**

Approx. 90 min

*These flights are non exclusive and may be shared with other passengers.*

Take off on a unique scenic flight viewing some of the North Islands pristine beaches and renowned sights. Depart from our Heliport and fly out towards the crater of dormant Rangitoto. Viewing tranquil Waiheke Island as you head towards the Coromandel Peninsular, you will view Kennedy Bay before track east where you will view the beaches of Matarangi, Kauotunu, Matarangi and Opito Bay.





### **MUDBRICK VINEYARD HELI-DINING PACKAGE**

Tempt your taste buds at one of Waiheke's wonderful Vineyard Restaurants—flying there in style by helicopter. The timeless appeal and natural ambience of Mudbrick Vineyard and restaurant with its characteristic richly-coloured earth bricks and up-market cuisine. Depart Heletranz Heliport and enjoy a spectacular scenic helicopter flight viewing the crater of Rangitoto Island, fly past Motutapu Island before landing at Mudbrick Vineyard on Waiheke Island.

On arrival, enjoy a glass of Mudbrick bubbles followed by a superb 3-course à la carte lunch or dinner with tea or coffee to end your meal. Return by road transfer from vineyard to Matiatia Wharf and ferry to downtown Auckland or by helicopter from Reeves airfield.



### **TANTALUS ESTATE VIP HELI-DINING PACKAGE**

Tantalus Estate is a destination sought after by travellers and locals alike, set amongst the vines in the heart of Onetangi Valley on Waiheke.

Depart Heletranz heliport in Albany and enjoy a stunning scenic helicopter flight over the glistening waters of the Hauraki Gulf with views of Rangitoto, Motutapu, and Motuihe Island before landing in the grounds of Tantalus Estate on Waiheke. On landing, a welcome greeting with a glass of Tantalus Methode Traditionnelle on arrival and incredible VIP 4-course à la carte lunch. Return by road transfer from Vineyard to Matiatia Wharf and ferry to downtown Auckland or by helicopter back to our Heliport.



### **ECO-ZIP & VINEYARD LUNCH**

Depart Heletranz heliport and enjoy a spectacular scenic helicopter flight viewing the Islands of the Hauraki Gulf before landing at EcoZip Adventures on Waiheke Island.

Three 200m dual flying fox ziplines will fly you smoothly down into a stunning tract of original and regenerating native 'bush' (forest). It's a scenic 30-minute guided walk back to base where you'll learn about local flora and fauna and the conservation of our spectacular natural environment. Afterwards, make your own way from EcoZip to your chosen Vineyard. 3 Course lunch includes a glass of wine on arrival. Make your own way from the Vineyard to Maitaita Wharf for a cruise back to downtown Auckland.

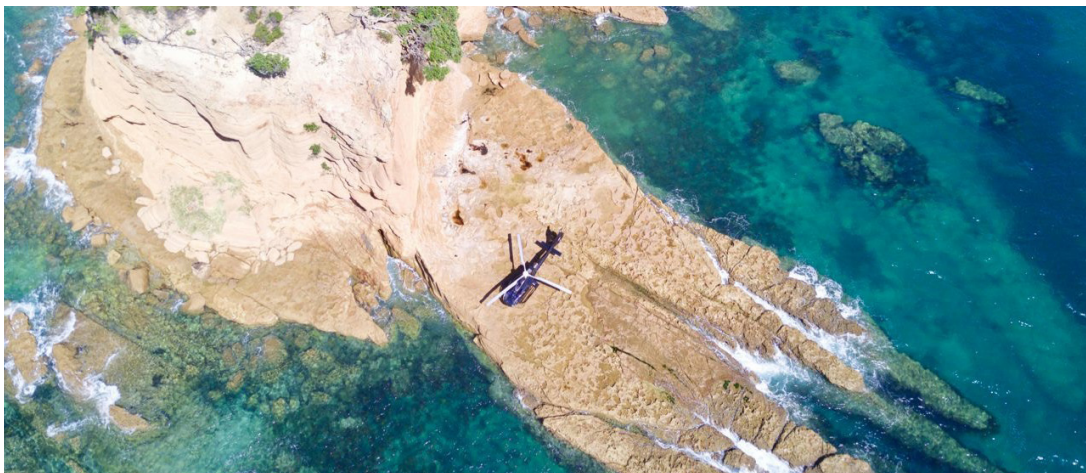
---



### **ONE DAY EXCLUSIVE HELI-TOUR OF WAITOMO & HOBBITON**

Depart Heletranz Heliport flying out towards the west coast of the north island viewing the rugged black sand coastline, down to around Raglan, before turning inland to land at Waitomo Caves. Your Waitomo Glow worm Caves, Guided Trip takes you down into the caves, onto a boat, where you float through caves lit with Glow Worms as well as an excellent display of Stalactite and Stalagmite structures. Re-board your waiting helicopter for the flight to land at The Shires Rest Café in Matamata where you will experience the read Middle- earth with a visit to the Hobbiton Movie Set where you will enjoy the scheduled Hobbiton tour. Your tour ends back at The Shires Rest TM where you will enjoy refreshments before you re-board your helicopter for the return flight to the Heletranz Heliport.





## **GUIDED HELI-FISHING**

If you love fishing and flying, this is the trip for you!

Heletranz is the pioneer of Heli-Fishing first made famous on Geoff Thomas's original Snapper Secrets video in the early 1990's—and has made thousands of fishermen happy over the years! The Hauraki Gulf and surrounding islands have some of the best fishing in the world, the sub-tidal reefs of the North-East Coastline and Great Barrier have a rich and diverse marine habitat which supports numerous species of fish including Snapper, Kahawai and Kingfish.



# HELETRANZ TAUPO







## **BEST OF TAUPŌ TOUR**

Highlights include the Huka Falls, Wairakei Geo thermal Vlley, Māori Rock Carvings and Craters of the Moon. Experience all of this from the vantage point of a helicopter. A uniquely New Zealand tour.

Approximately 30 minutes of flying time to experience the best of what Taupō has to offer.





## **HUKA FALLS/ROCK CARVINGS AND BEYOND**

Enjoy breathtaking views of Taupō and its two most scenic icons, Huka Falls and the Maori Rock Carvings. An aerial view is the only way to truly appreciate the majesty of these features; one carved in time by nature the other by man in culture. Approximately 15 minutes of flying.

---

## **TONGARIRO VOLCANIC DIRECT**

Fly direct to the summit craters of Mt Tongariro and Mt Ngauruhoe. From here enjoy spectacular views of the Tongariro Crossing, Emerald Lakes, Red Crater and thermal activity of the Te Maari Hot Springs. Travel east to the Kaimanawa Forest Park flying up a pristine back country wilderness river for panoramic views back towards Great Lake Taupō. Return via the beautiful White Cliffs on the eastern side of Lake Taupō. Allow 1 hour for this journey.

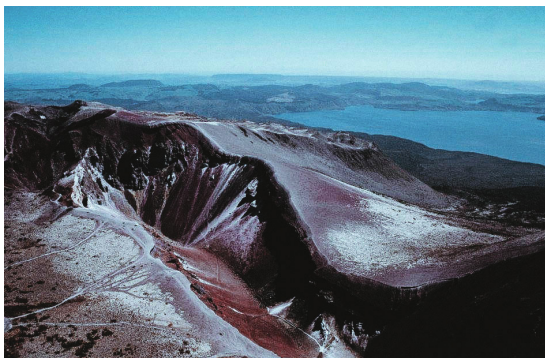


## **TOTALLY TAUPŌ COMBO**

Start your day out in Taupō on a scenic cruise with Chris Jolly Outdoors cruising out to the Maori Rock Carvings. Return to Taupō, board our helicopter for an exciting 12 minute scenic flight over local icons. Land at the Huka Falls Jet for a thrilling 30 minute jet boat ride to the base of the spectacular Huka Falls! This combo can be enjoyed in reverse order. Allow 3 hours. Price is subject to a minimum of 2 passengers.







## **MT TARAWERA FAULT LINE DIRECT**

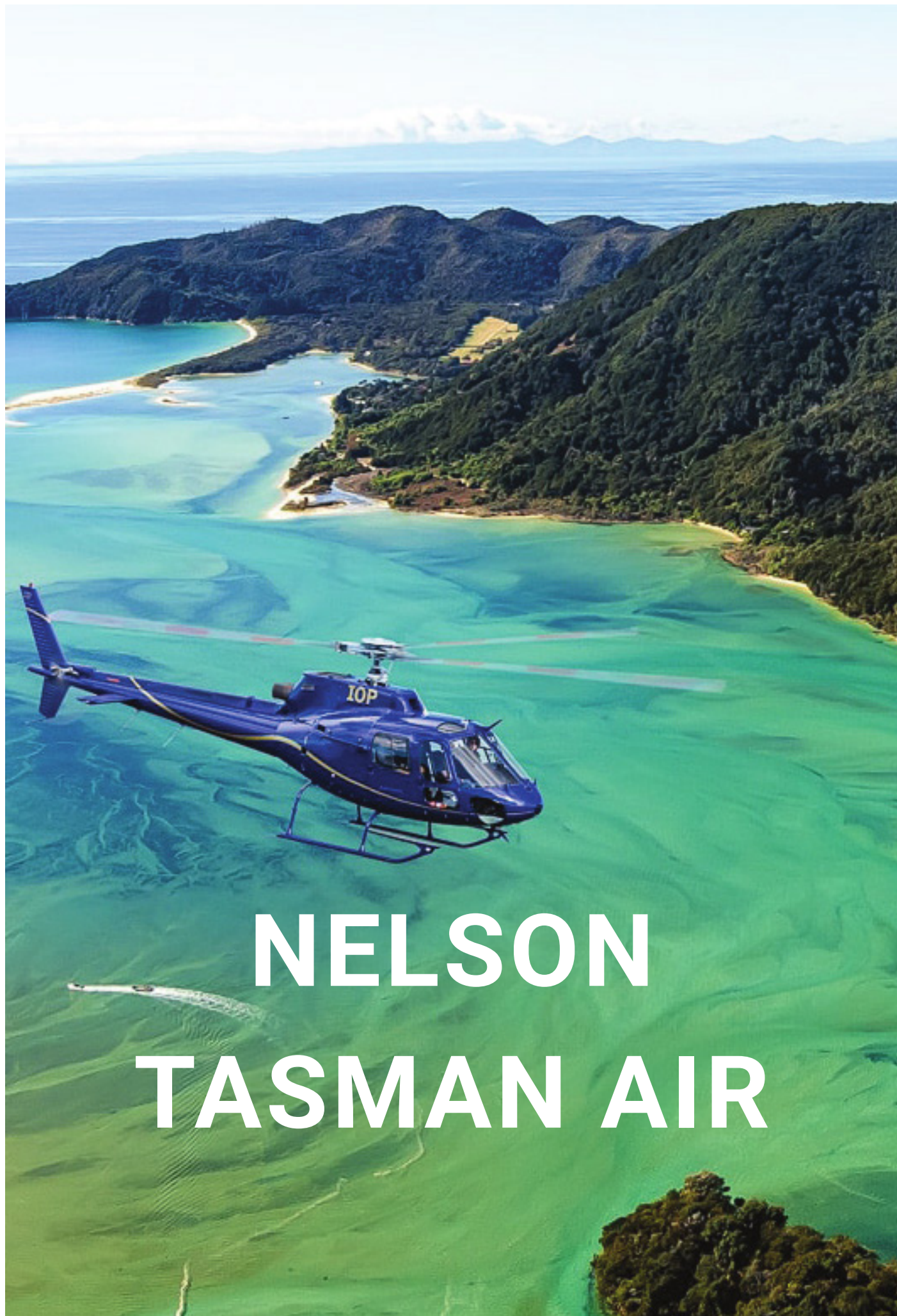
An aerial perspective - best seen from above! Fly north along the volcanic fault line and Waikato River. Enjoy aerial views of the colourful thermal reserves of Waimangu and Wai-O-Tapu, before climbing high above the summit of the sacred volcano Mt Tarawera. Allow 1 hour for this journey.

---

## **WORLD HERITAGE VOLCANIC SAFARI + REMOTE WILDERNESS**

This tour combines some of the North Island's most majestic volcanic alpine scenery with a remote landing in the Kaimanawa Forest Park. This truly amazing experience includes stunning views of our World Heritage Area Volcanoes; Mt Ruapehu, Mt Tongariro and Mt Ngauruhoe.





# NELSON TASMAN AIR





## **ABEL TASMAN EXPLORER**

Views that will make you scream with joy! The Abel Tasman is New Zealand's most iconic national park with its inviting golden beaches, pristine blue waters and granite cliff coastline.





## **ABEL TASMAN SCENIC & LORD OF THE RINGS HELICOPTER TOUR**

This scenic tour shows the beauty and diversity of the Abel Tasman Park. From glistening beaches to the inspiring surroundings of Canaan Downs, ancient beech trees, bounded by rolling meadow scattered with eerie rock formations, make flying over this hilltop scenic reserve an unforgettable experience.

---

## **FULL ON AMAZING - TOP OF THE SOUTH ISLAND TOUR**

This full on air adventure is all about marvelling at the magnificent views of the Top of the South. You'll see everything from the spit of the northern most point of the South Island through to the golden sands of the Abel Tasman!



## **WILD WEST COAST & ABEL TASMAN TOUR**

An adventure into the rugged West Coast is something that will be entrenched in your memory forever. This trip gets you above the most idyllic scenery and the helicopter tour includes a private beach landing on the West Coast.







## **ULTIMATE FLY FISHING**

Nirvana for fly fishermen. In the morning fly to a pristine mountain stream known for its big brown trout, where 8-10 pounders are not uncommon. Then after enjoying a gourmet picnic lunch, fly to a special ocean location where kingfish cruise in the shallows on the backs of huge Eagle Rays which bounce along the bottom stirring up baby flounder.

---

## **ABEL TASMAN KAHURANGI ADVENTURE**

We track west into the heart of the Kahurangi National Forest flying over Harwood Hole. At 1000 feet deep and formed by eons of water erosion, this is the deepest hole in the Southern Hemisphere. Our first stop lands at a remote alpine location, where we can enjoy the peace and quiet of New Zealand's largest national park and take a great walk.



## **BESPOKE PUPU SPRINGS & WESTHAVEN INLET DISCOVERY**

Fly over Harwood Hole, a 1000 foot deep natural holes formed by water erosion, and the deepest hole in the Southern Hemisphere. Carry on to the incredibly clear Pupu Springs, the World's second clearest natural spring (clearest is under the Antarctic Ice Cap) and take the 30 minute walk around these spiritually uplifting, pristine Springs.







# MOUNT COOK SKI PLANES & HELICOPTERS





## **THE LINDIS LODGE TRANSFER** **AHURIRI VALLEY**

Near the bottom of the habitable world is the breathtaking and pristine Ahuriri Valley. Carved over millions of years by the once fierce glacial waters of the Ahuriri River, the valley is now a tranquil, yet comfortingly rugged slice of paradise in New Zealand's South. And resting almost imperceptibly on the valley floor is The Lindis, a new and truly unique luxury lodge.



## **TASMAN TASTER WITH GLACIER LANDING**

Explore the valleys and peaks of Aoraki Mt. Cook National Park by sky in one of our state-of-the-art helicopters. Fly over the Tasman Terminal Lake before landing on the beautiful Brass Peak or Liebig Dome, within the National Park. With exceptional views of Aoraki Mt Cook and the surrounding snow-capped mountain ranges right from take off, you will be captivated throughout the entire flight.

---

## **TASMAN EXPERIENCE WITH ALPINE LANDING**

The Southern Alps of New Zealand's South Island offers one of the most visually spectacular glacier environments in the world. Experience the adventure of flying through the towering mountains of the Southern Alps in a ski plane or helicopter. Exceptional views of Aoraki Mt Cook and the Hochstetter Icefall as you fly up the Tasman Valley. Explore the flawless and pristine Tasman Glacier and experience this unique alpine environment with 600 metres of glacier ice beneath your feet.



## **ULTIMATE ALPINE EXPERIENCE (COMBO)**

Fly in a ski plane and a helicopter on the same day for an unforgettable experience of Aoraki/Mount Cook. Enjoy a scenic adventure that includes a glacier snow landing on the Tasman Glacier.

From takeoff to landing, you will enjoy spectacular views! Fly up the Tasman Valley over the breathtaking blue glacier lake. See the Hochstetter Icefall and the cloud-piercing Aoraki/Mount Cook before landing on the upper snowfields of the Tasman Glacier. Take time to enjoy this unique alpine environment before swapping aircraft and returning to Mount Cook Airport.



These mountains are covered in snow and ice all year round, and the aircraft fully shuts down on landing so you can enjoy the peace and quiet of nature. You'll also see Tasman Terminal Lake, Grand Plateau, Plateau Hut, as well as the full length of the Tasman Glacier.





## GLACIER HIGHLIGHTS

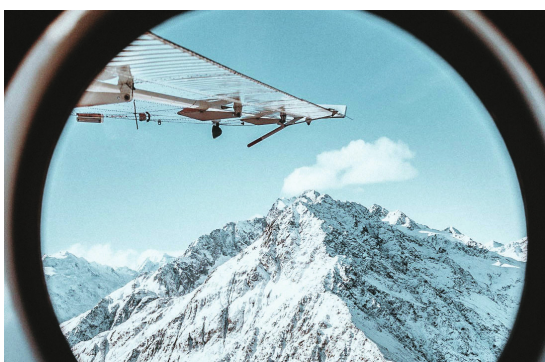
Indulge in the silent serenity of the Southern Alps with a ski plane or helicopter tour.

You will enjoy the scenic beauty of Aoraki/Mt Cook and the national park surrounding it from takeoff to landing. The snow-capped mountains, the bright blue of the glacier lake and the lush greens of the vegetation are just a few of the magnificent sights you will experience as you fly through the Southern Alps.

---

## THE GRAND CIRCLE

This Mount Cook helicopter tour or ski plane adventure is the ultimate way to see the Southern Alps. Traverse the Main Divide to the West Coast and view the magnificent landscape of the Fox and Franz Josef Glaciers. Track north along the Tasman Sea before recrossing the snow-capped peaks of the Southern Alps to the Tasman Glacier.



## MT COOK 360

This is a 35-minute flight that encompasses all the main geographic features in the Aoraki Mt Cook National Park by circumnavigating Aoraki/Mt Cook, our highest peak at 12,349 feet. Mt Cook is the centre of the national park and this circular flight takes in all the iconic geographic features that this region of NZ has to offer.

You will see the longest glacier in NZ, the Tasman Glacier, on the eastern side of the main divide. We will then cross the main divide to the West Coast and take in the Franz Josef Glacier and Fox Glacier. We will circle back onto the eastern side of the Southern Alps into the Hooker Valley before returning back into the Tasman Valley to land back where we started.





## SKI THE TASMAN

The ski terrain is moderate (blue runs) and the pace is relaxed. It is personalised to the needs of the group. This is a great intro to backcountry skiing with family and friends.

With two ski runs included in the Ski The Tasman package, Mount Cook Ski Planes and Helicopters will fly the ski party into the top of the Tasman Glacier, taking a different line and starting from a different landing spot for each of the two runs. This incredible day combines the breath-taking views of the Southern Alps and Aoraki/Mt Cook National Park, with the once-in-a-lifetime experience of actually skiing on the famous Tasman Glacier, New Zealand's longest glacier. Our trips are open for skiers and boarders, and side adventures include visits to the ice caves and natural ice features during the ski down.



## PICNIC AMONGST THE PEAKS

With our Picnic Amongst the Peaks Tour you can enjoy a once in a lifetime experience. This flight option gives you the chance to land on the snow coated glacier aboard your private skiplane, before enjoying a hamper surrounded by the majestic peaks of the Aoraki/Mt Cook National Park.







# SKYDIVE ABEL TASMAN





## **20,000FT TANDEM SKYDIVE**

The only drop zone in New Zealand which can show you views of both the North and South Island. Feel the freedom of flying over turquoise oceans, snow-capped mountains & 3 national parks - some of the most beautiful scenery on earth right at the centre of New Zealand. Experience The Ultimate Thrill of Skydiving from 20,000ft, the highest in NZ! You will enjoy a 40 min scenic flight with views of both North & South Islands, multiple National Parks, beaches and blue seas.





## 16,500 ft SKYDIVE

Among the highest tandem skydives in the South Island! Enjoy a 20 minute breath taking flight over snow-capped mountains, golden beaches, turquoise oceans, Abel Tasman and Kahurangi national parks. At 16,500ft the door of the aircraft opens and the fun begins! 70+ seconds of freefall!

## 13,000 ft SKYDIVE

Jumping from 13,000 feet, you will enjoy a 15-minute scenic flight, up to 45 seconds of freefall and then three to five minutes under the parachute. There's nothing like a parachute ride over turquoise oceans, snowy mountains and national parks – a scenic flight at the heart of New Zealand!



## 9,000 ft SKYDIVE

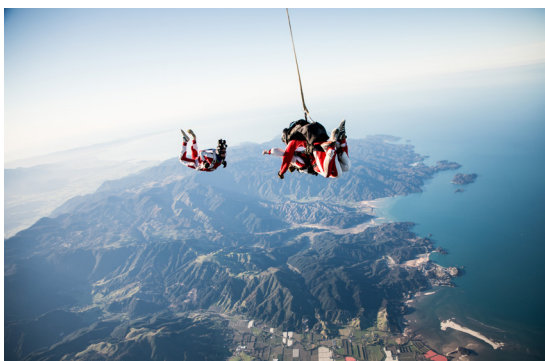
Jumping from 9,000 ft, you will enjoy a 10-minute scenic flight up to jump height, up to 30 seconds of freefall and then 5 to 7 minutes under the parachute.

### CAMERA PACKAGES

We offer a variety of camera packages to suit the customer's budget. These can be selected at the time of their experience.

These include:

- **Handycam Photos & Videos**
- **Camera Flyer**
- **Best of Both Worlds - Handycam + Camera Flyer**





# SKYDIVE FRANZ JOSEF & FOX GLACIER







## **20,000FT TANDEM SKYDIVE**

NZ's Highest Skydive appeared on Redbull's list of the 'Top 9 Most Insane Places to Skydive in the World'. Lonely Planet said 'This could be the most scenic skydive you ever do'. Enjoy a 20 minute scenic flight and over 85+ seconds of freefall.





## **16,500ft SKYDIVE**

Experience the unparalleled thrill of freefall from 16,500ft for 65 seconds above the Westland & Aoraki/Mt Cook National Parks before the parachute is deployed and you float smoothly back to ground, surrounded by snow-peaked mountains, lakes and shimmering glaciers.

---

## **13,000ft SKYDIVE**

Jumping from 13,000ft you will enjoy a 10 min scenic flight, up to 45 seconds of freefall and then 3-5 min under the parachute. A spectacular free fall with views of soaring mountains, ice fields, and the rugged coast.



## **9,000FT TANDEM SKYDIVE**

Jumping from 9,000 feet, you will enjoy a 10-minute scenic flight up to jump height, up to 30 seconds of freefall and then 5 to 7 minutes under the parachute.

### **CAMERA PACKAGES**

We offer a variety of camera packages to suit the customer's budget. These can be selected at the time of their experience.

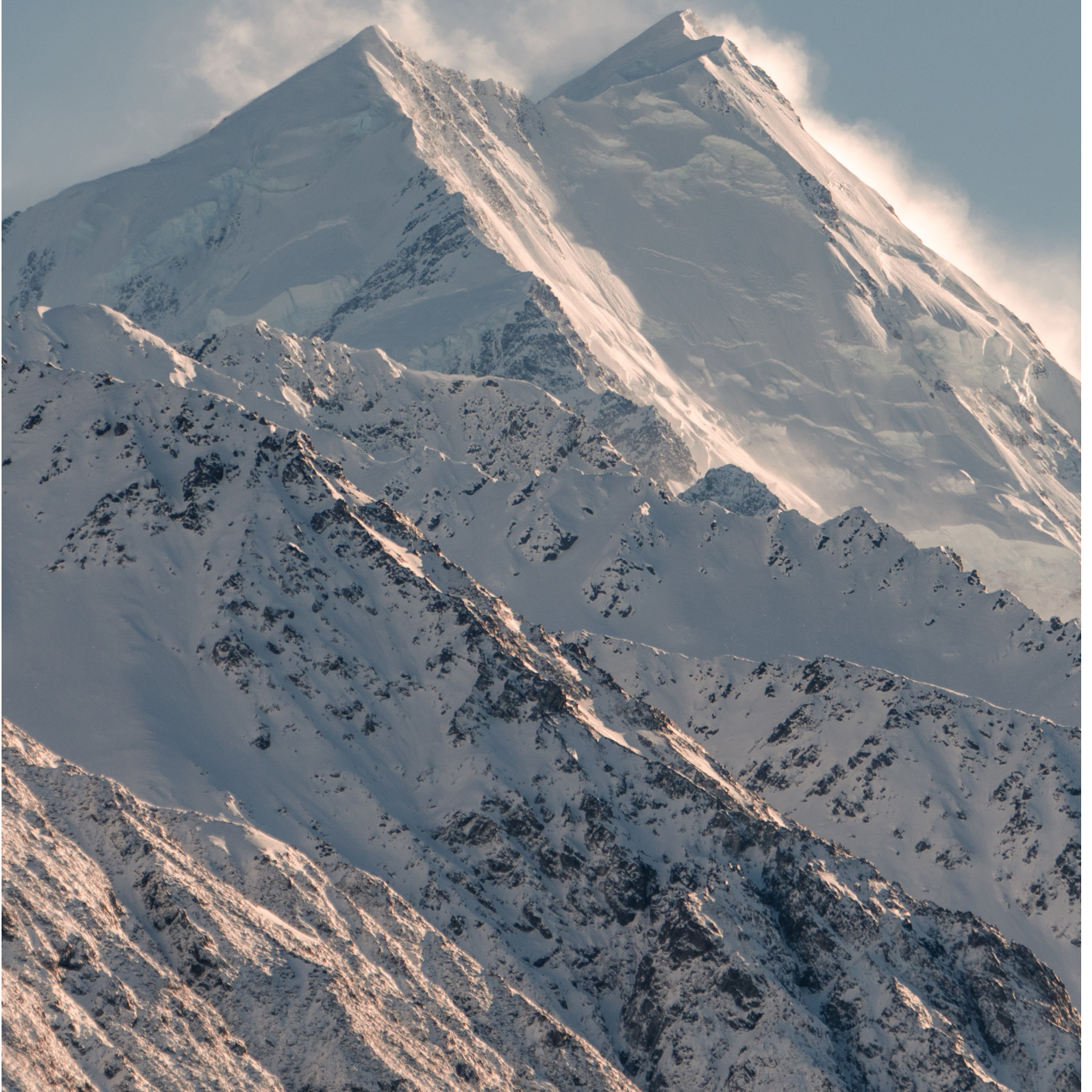
These include:

- **Handycam Photos & Videos**
- **Camera Flyer**
- **Best of Both Worlds - Handycam + Camera Flyer**





# SKYDIVE MT. COOK







## **15,000FT TANDEM SKYDIVE**

There's no better way to experience Aoraki/Mt Cook National Park than free-falling over it! 60 seconds of freefall allows for plentiful time to take in the stunning back drop filled with snow-capped mountains, braided river beds and the mighty Aoraki/ Mt Cook.

Jumping from 15,000ft you will enjoy a 20 min scenic flight, up to 60 seconds of freefall and then 3-5 min under the parachute.





## **13,000ft SKYDIVE**

Jump from 13,000ft and enjoy an unforgettable skydiving experience. This jump includes a scenic flight, up to 45 seconds of freefall, and a few minutes under the parachute.

---

## **9,000ft SKYDIVE**

Escape the ordinary and jump out of an aircraft at 9,000ft in the air! Experience hair-raising freefall for up to 30 seconds, before the parachute is deployed and you float peacefully back down to earth. Admire panoramas of Mt Cook and the Aoraki Basin as you descend.



## **CAMERA PACKAGES**

### **CAMERA PACKAGES**

We offer a variety of camera packages to suit the customer's budget. These can be selected at the time of their experience.

These include:

- **Handycam Photos & Videos**
- **Camera Flyer**
- **Best of Both Worlds - Handycam + Camera Flyer**







**SKY SUITES**

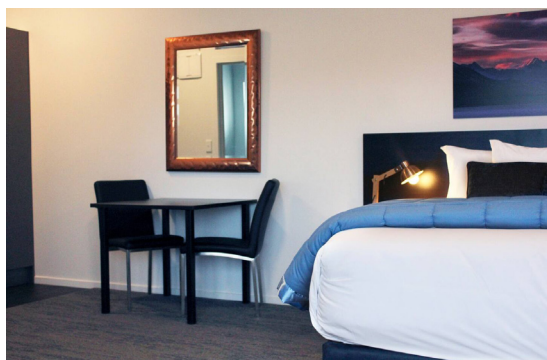




## **SKY SUITES ACCOMMODATION MT.COOK**

Sky Suites offer the amazing, unique experience of staying in a suite above the hangar of New Zealand's most spectacular skydiving experience, Skydive Mt Cook, at Pukaki Airport, Twizel. We offer a variety of accommodation, from our Suites that come with complimentary Wine, Fudge and Continental Breakfast to our Standard Suites and the wheelchair friendly Suite 1 which provides great accessibility on the ground floor c/w door front parking and an open shower bathroom.

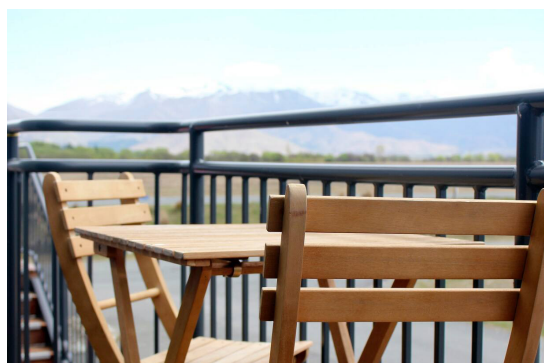




## **SKY SUITES** **5 AVAILABLE SUITES**

Stay at Pukaki Luxury Suites for a premium, luxurious stay on Pukaki Airfield, conveniently located between Queenstown and Christchurch. Explore the Mackenzie Basin, gaze at the starry skies, or take to the skies for an unforgettable experience. 24/7 concierge service available.

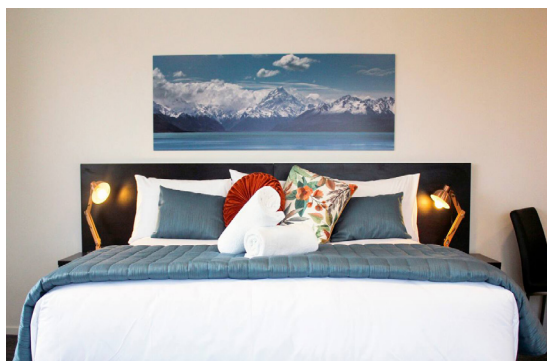
With all the excitement of staying onsite you can opt to skydive yourself or choose to sit on the balcony soaking in the sun with a glass of wine and watching the parachutists as they float back to earth against the incredible backdrop of Aoraki Mt Cook. Talk to us about our exclusive Skydiving offers!



As the day turns to night you'll relax and watch the sunset behind the Southern Alps and wait for the stars to come out. You'll soon understand why staying under the Aoraki Mackenzie UNSECO International Dark Sky Reserve has become the highlight for so many travellers.

### **All our Suites offer:**

- Free Wi-Fi
- Smart TV
- Super King Bed
- Bathroom
- Heated Towel Rail
- Heating & AirCon
- Non – Smoking (Balcony)
- Accessible 24/7
- Kitchenette



## **SAFETY & SUSTAINABILITY**

Safety is a top priority for INFLITE Group. We are committed to developing, implementing and maintaining safety strategies and processes to ensure that all our activities achieve the highest level of operational, non-operational and environmental safety performance in all areas of our air transport and adventure operations.

INFLITE Group is committed to maintaining a safe and healthy working environment for the safety and health of our workers and other persons wherever we are operating with.

Health and Safety is a shared responsibility, and everyone at INFLITE Group is expected to share our company commitment to proactively avoid all accidents and incidents, which may cause personal injury, property damage or loss of any kind.

We will also act on the lessons learned from issues identified to systematically reduce the risks of our operation. Every employee is expected to act safely at all times to ensure that no action or inaction causes harm to themselves, their fellow employees or others in the areas we work and operate.



**SKYDIVE.CO.NZ**  
**SKYDIVEMTCOOK.COM**  
**SKYDIVEFRANZ.CO.NZ**  
**MTCOOKSKIPLANES.COM**  
**INFLITE.NZ**  
**HELETRANZ.CO.NZ**  
**INFLITECHARTERS.COM**

